

Carve The Holy Child...



STEP 1



The band-sawed blank. If you don't want to bother with the feet, simply eliminate them.



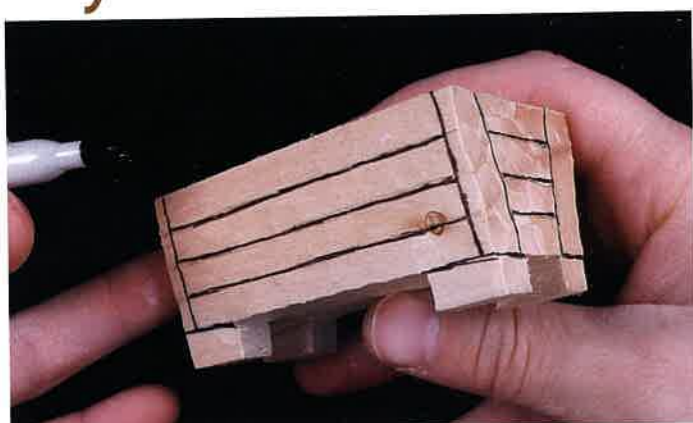
STEP 3 Do the ends next. The gouge definitely works better on the end-grain than a knife would.



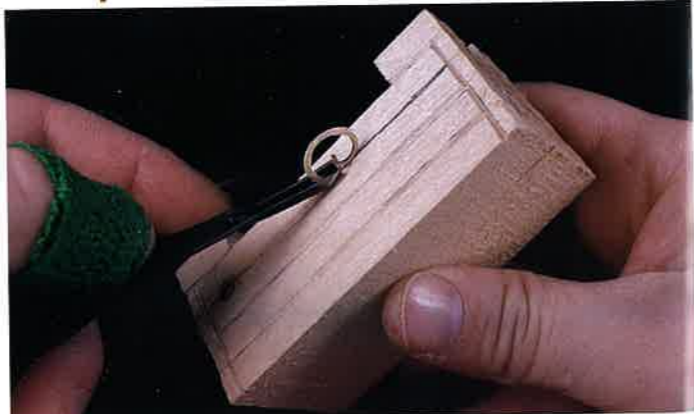
STEP 2 The first thing to do is the outside of the manger. Using a 1/2" fish-tail gouge, skim the outer surfaces to erase the saw marks. You could use a knife, but I prefer the gouge; it creates more texture. Do the sides first.



STEP 4 Do the bottom. Don't worry about the feet; we'll do those with a knife.



STEP 5 Referring to the pattern, draw in the planks as shown.



STEP 6 Using a small 1/8" v-tool, define each plank by re-tracing along the lines.

STEP BY STEP



STEP 7 Using a knife, make tiny chip cuts at each intersecting line, as shown. This helps to make the planks more three-dimensional and rustic looking. While you have the knife in hand, bevel all corners and shape the feet.



STEP 9 Now for the baby. The Holy Child will be more or less a deep relief carving, carved into the top surface of the manger. Draw in a rectangle as shown, and plunge cut deeply along these lines with your knife. Be sure to follow the angle of the outer sides!



STEP 11 Notice the mound effect. Draw in the main blanket line. Refer to the pattern for this; the placement is critical.



STEP 8 The outer manger is complete.



STEP 10 Using the knife, carve away the inner edges as shown. The idea is to form a kind of mound. Don't go any deeper than 3/8" or so on the edges.



STEP 12 Using a 3/8" v-tool, follow the blanket line to create a groove like the one shown. Try to have the v-groove centered where the line was.

Carve The Holy Child...



STEP 13 Using the knife, further define the v-groove first by plunge cutting...



STEP 14 ...and second by smoothing out the groove, making it more fluid. Study the photo of the finished piece. The left side of the blanket should appear to be overlapped by the larger right side.



STEP 15 Progress so far. Notice that I have given the blanket form. The child's head has been slightly rounded.



STEP 16 The head will appear to be resting at a three-quarter turn towards the viewer. Shape the head to give this impression. Notice the lines I have drawn to illustrate the planes of the face.



STEP 17 Using a 1/8" shallow gouge, plunge straight in where the nose will be. Refer to the pattern for placement.



STEP 18 Using a 1/4" shallow gouge, create a hollow representing the nose bridge and eye area. Keep it very shallow!

STEP BY STEP



STEP 19 Using your detail knife, pare away small amounts of wood below the nose to help bring it out a little. Shape the nose with the knife as well. Careful, it is very small.



STEP 20 The face shape with the nose finished. I have drawn in the closed eyes and mouth.



STEP 21 Using the detail knife, simply create small v-grooves for the eyes and mouth. These are very minimal features, as a baby's usually are. The mouth opening should be about half the width of the eyes.



STEP 22 For the one showing ear, keep it simple; outline it with the 1/8" shallow gouge, and pare away a small amount behind it for definition.



STEP 23 Using a very small veiner gouge, carve in shallow curly-cues for baby hair. Using the same gouge, hollow out the ear a bit.



STEP 24 The completed face. Draw in curved lines representing folds in the blanket, as shown.

Carve The Holy Child...



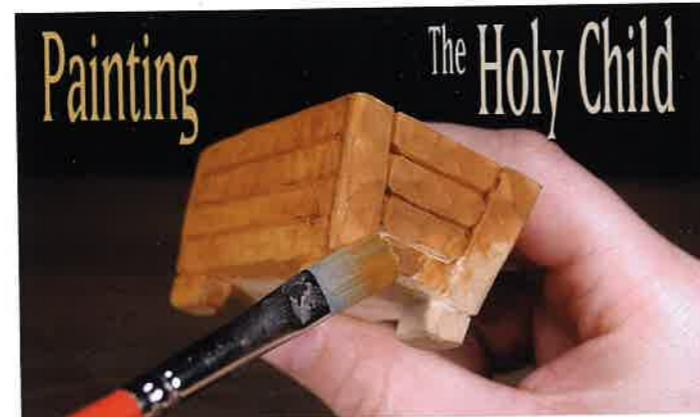
STEP 25 Define these folds with a 1/4" half round gouge.



STEP 26 As a final added detail, dig in with the knife around the corners and sides to give the illusion of depth. I have marked the areas to carve as shown.



STEP 27 Carving is complete and ready for painting!



STEP 1 After cleaning, allow the carving to dry. Using the large and small brushes, apply raw sienna to the outside and inner rim of the manger.



STEP 2 Using the small round brush, paint the blanket antique white.



STEP 3 With the small brush, apply a wash of corn yellow to his hair.

STEP BY STEP



STEP 4 Apply a wash of flesh tone to the face.



STEP 5 Apply a tiny wash of flesh tone mixed with bright red to his cheek for color.



STEP 6 Using the small brush, apply washes of medium gray into the deep areas of the blanket to give it depth. Be sure to blend it in smoothly to the white. Let the carving dry for at least an hour.



STEP 7 Seal the carving with a thin coat of satin polyurethane. Let the carving dry overnight.



STEP 8 Apply the antique brown gel stain.



STEP 9 Immediately wipe away the excess stain with a cotton cloth. Let the carving dry overnight before handling.